

Claridge®



Contract Furniture & Interiors

PRICING 2019

CONNECT® >>

MIX

Table of Contents

3	Glass Markerboards	10	Evolve Markerboard and Tackboard
4	LCS ³ Porcelain™ Markerboards	11	Sliding Board Systems
4	MIX Markerboards	12	Mobile Markerboards
5	MIX Contemporary Mobiles	13	Space Creators
6	MIX Industrial Mobiles	13	LCS ³ Porcelain™ Marker Walls and Tack Walls
7	Dry Erase Markerboards	14	Glass Marker Walls
8	Expression Modular Boards	15	Accessories
9	X2 Modular Boards	16	Color Guides

Writing Surfaces and Standard Colors

A dry erase markerboard's effectiveness as a communication tool is only as good as its writing surface, which is the primary medium for exchanging visual information. Not all writing surfaces are equal, and the quality and composition of the material used to make them directly affect the user experience.

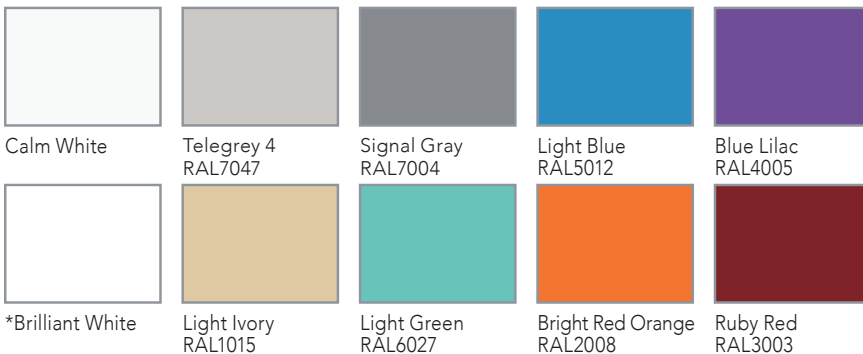


Frameless Claridge Glass Markerboard



Profile Series LCS³ Porcelain™ Markerboard

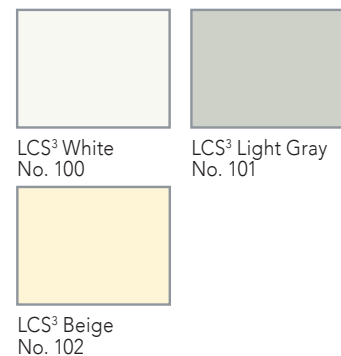
Standard Magnetic Glass Markerboards



* Standard markerboard color comes in Brilliant White.

Available in 180 optional colors and unlimited custom colors

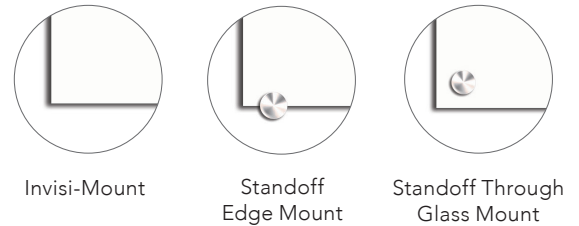
LCS³ Porcelain™ Markerboards



Magnetic and Non-Magnetic Glass Markerboard

Glass Markerboards are stylish, functional and easy to maintain, glass markerboards add class to any environment. 1/4" thick glass is powder coated in your choice of 10 standard or over 180 optional colors. **Brilliant White is furnished if color not specified.** Custom colors and custom logos optional.

Magnetic Glass Markerboards are furnished with rare-earth magnets. Glass markerboards are offered with three mounting options – stand-off edge mount with edge grips, stand-off through glass mount, or invisimount, no visible mounting hardware.



Magnetic Glass w/ Stand-off Edge Mount

Number	Size (H x W)	Weight	Price
MGM-23	24" x 36"	48 lbs.	\$940
MGM-34	36" x 48"	96 lbs.	\$1,283
MGM-35	36" x 60"	120 lbs.	\$1,738
MGM-44	48" x 48"	128 lbs.	\$1,619
MGM-45	48" x 60"	160 lbs.	\$1,846
MGM-46	48" x 72"	195 lbs.	\$2,098
MGM-48	48" x 96"	256 lbs.	\$2,874
MGM-410	48" x 120"	320 lbs.	\$3,352
MGM-56	60" x 72"	240 lbs.	\$2,358
MGM-58	60" x 96"	320 lbs.	\$2,999
MGM-510	60" x 120"	400 lbs.	\$3,612

Freight Class 70

Non-Magnetic Glass w/ Stand-off Edge Mount

Number	Size (H x W)	Weight	Price
PGB-23	24" x 36"	48 lbs.	\$652
PGB-34	36" x 48"	96 lbs.	\$1,173
PGB-35	36" x 60"	120 lbs.	\$1,587
PGB-44	48" x 48"	128 lbs.	\$1,498
PGB-45	48" x 60"	160 lbs.	\$1,625
PGB-46	48" x 72"	195 lbs.	\$1,967
PGB-48	48" x 96"	256 lbs.	\$2,699
PGB-410	48" x 120"	320 lbs.	\$2,945
PGB-56	60" x 72"	240 lbs.	\$2,041
PGB-58	60" x 96"	320 lbs.	\$2,718
PGB-510	60" x 120"	400 lbs.	\$3,188

Freight Class 70

Magnetic Glass w/ Stand-off Through Glass Mount

Number	Size (H x W)	Weight	Price
MGM-23-TG	24" x 36"	48 lbs.	\$1,228
MGM-34-TG	36" x 48"	96 lbs.	\$1,593
MGM-35-TG	36" x 60"	120 lbs.	\$2,350
MGM-44-TG	48" x 48"	128 lbs.	\$1,853
MGM-45-TG	48" x 60"	160 lbs.	\$2,516
MGM-46-TG	48" x 72"	195 lbs.	\$2,703
MGM-48-TG	48" x 96"	256 lbs.	\$3,172
MGM-410-TG	48" x 120"	320 lbs.	\$3,987
MGM-56-TG	60" x 72"	240 lbs.	\$3,165
MGM-58-TG	60" x 96"	320 lbs.	\$3,692
MGM-510-TG	60" x 120"	400 lbs.	\$4,394

Freight Class 70

Non-Magnetic Glass w/ Stand-off Through Glass Mount

Number	Size (H x W)	Weight	Price
PGB-23-TG	24" x 36"	48 lbs.	\$1,060
PGB-34-TG	36" x 48"	96 lbs.	\$1,397
PGB-35-TG	36" x 60"	96 lbs.	\$2,069
PGB-44-TG	48" x 48"	128 lbs.	\$1,626
PGB-45-TG	48" x 60"	160 lbs.	\$2,251
PGB-46-TG	48" x 72"	195 lbs.	\$2,435
PGB-48-TG	48" x 96"	256 lbs.	\$2,800
PGB-410-TG	48" x 120"	320 lbs.	\$3,494
PGB-56-TG	60" x 72"	240 lbs.	\$2,703
PGB-58-TG	60" x 96"	320 lbs.	\$3,197
PGB-510-TG	60" x 120"	400 lbs.	\$3,899

Freight Class 70

Magnetic Glass with Invisi-mount

Number	Size (H x W)	Weight	Price
MGMI-23	24" x 36"	48 lbs.	\$711
MGMI-34	36" x 48"	96 lbs.	\$1,105
MGMI-35	36" x 60"	120 lbs.	\$1,629
MGMI-44	48" x 48"	128 lbs.	\$1,360
MGMI-45	48" x 60"	160 lbs.	\$1,744
MGMI-46	48" x 72"	195 lbs.	\$1,873
MGMI-48	48" x 96"	256 lbs.	\$2,489
MGMI-410	48" x 120"	320 lbs.	\$3,000
MGMI-56	60" x 72"	240 lbs.	\$2,178
MGMI-58	60" x 96"	320 lbs.	\$2,673
MGMI-510	60" x 120"	400 lbs.	\$3,174

Freight Class 70

Non-Magnetic Glass w/ Invisi-mount

Number	Size (H x W)	Weight	Price
PGBI-23	24" x 36"	48 lbs.	\$599
PGBI-34	36" x 48"	96 lbs.	\$945
PGBI-35	36" x 60"	120 lbs.	\$1,446
PGBI-44	48" x 48"	128 lbs.	\$1,196
PGBI-45	48" x 60"	160 lbs.	\$1,540
PGBI-46	48" x 72"	195 lbs.	\$1,760
PGBI-48	48" x 96"	256 lbs.	\$2,283
PGBI-410	48" x 120"	320 lbs.	\$2,770
PGBI-56	60" x 72"	240 lbs.	\$1,945
PGBI-58	60" x 96"	320 lbs.	\$2,525
PGBI-510	60" x 120"	400 lbs.	\$3,157

Freight Class 70

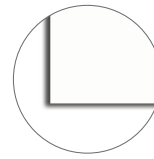
See page 15 for magnetic accessories for Magnetic Glass Markerboards.

Non-Glare Glass Markerboard

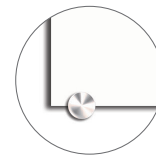
Non-Glare Glass markerboards are offered with three mounting options – stand-off edge mount with edge grips, stand-off through glass mount, or invis-mount, no visible mounting hardware.

1/4" thick glass is powder coated in your choice of 10 standard or over 180 optional colors. **Brilliant White is furnished if color not specified.** Custom colors and custom logos optional.

Non-Glare Glass Markerboards are furnished with rare-earth magnets.



Invisi-Mount



Standoff
Edge Mount



Standoff Through
Glass Mount

Magnetic Glass w/ Stand-off Edge Mount

Number	Size (H x W)	Weight	Price
C-MGM-34-NG	36" x 48"	96 lbs.	\$1,755
C-MGM-44-NG	48" x 48"	128 lbs.	\$2,246
C-MGM-46-NG	48" x 72"	195 lbs.	\$3,312
C-MGM-48-NG	48" x 96"	256 lbs.	\$4,228
C-MGM-410-NG	48" x 120"	320 lbs.	\$7,190
C-MGM-56-NG	60" x 72"	240 lbs.	\$5,448
C-MGM-58-NG	60" x 96"	320 lbs.	\$6,964
C-MGM-510-NG	60" x 120"	400 lbs.	\$8,482

Freight Class 70

Non-Magnetic Glass w/ Stand-off Edge Mount

Number	Size (H x W)	Weight	Price
PGB-34-NG	36" x 48"	96 lbs.	\$1,567
PGB-44-NG	48" x 48"	128 lbs.	\$2,025
PGB-46-NG	48" x 72"	195 lbs.	\$3,020
PGB-48-NG	48" x 96"	256 lbs.	\$3,988
PGB-410-NG	48" x 120"	320 lbs.	\$6,674
PGB-56-NG	60" x 72"	240 lbs.	\$5,147
PGB-58-NG	60" x 96"	320 lbs.	\$6,674
PGB-510-NG	60" x 120"	400 lbs.	\$8,385

Freight Class 70

Magnetic Glass w/ Stand-off Through Glass Mount

Number	Size (H x W)	Weight	Price
C-MGM-34-NG-TG	36" x 48"	96 lbs.	\$2,762
C-MGM-44-NG-TG	48" x 48"	128 lbs.	\$3,411
C-MGM-46-NG-TG	48" x 72"	195 lbs.	\$5,051
C-MGM-48-NG-TG	48" x 96"	256 lbs.	\$6,288
C-MGM-410-NG-TG	48" x 120"	320 lbs.	\$8,002
C-MGM-56-NG-TG	60" x 72"	240 lbs.	\$6,087
C-MGM-58-NG-TG	60" x 96"	320 lbs.	\$7,669
C-MGM-510-NG-TG	60" x 120"	400 lbs.	\$9,262

Freight Class 70

Non-Magnetic Glass w/ Stand-off Through Glass Mount

Number	Size (H x W)	Weight	Price
PGB-34-NG-TG	36" x 48"	96 lbs.	\$2,565
PGB-44-NG-TG	48" x 48"	128 lbs.	\$3,184
PGB-46-NG-TG	48" x 72"	195 lbs.	\$3,020
PGB-48-NG-TG	48" x 96"	256 lbs.	\$5,916
PGB-410-NG-TG	48" x 120"	320 lbs.	\$7,379
PGB-56-NG-TG	60" x 72"	240 lbs.	\$5,624
PGB-58-NG-TG	60" x 96"	320 lbs.	\$7,164
PGB-510-NG-TG	60" x 120"	400 lbs.	\$8,768

Freight Class 70

Magnetic Glass with Invisi-mount

Number	Size (H x W)	Weight	Price
C-MGMI-34-NG	36" x 48"	96 lbs.	\$1,717
C-MGMI-44-NG	48" x 48"	128 lbs.	\$2,208
C-MGMI-46-NG	48" x 72"	195 lbs.	\$3,252
C-MGMI-48-NG	48" x 96"	256 lbs.	\$4,178
C-MGMI-410-NG	48" x 120"	320 lbs.	\$7,123
C-MGMI-56-NG	60" x 72"	240 lbs.	\$5,384
C-MGMI-58-NG	60" x 96"	320 lbs.	\$6,937
C-MGMI-510-NG	60" x 120"	400 lbs.	\$8,378

Freight Class 70

Non-Magnetic Glass w/ Invisi-mount

Number	Size (H x W)	Weight	Price
PGBI-34-NG	36" x 48"	96 lbs.	\$1,555
PGBI-44-NG	48" x 48"	128 lbs.	\$2,011
PGBI-46-NG	48" x 72"	195 lbs.	\$2,982
PGBI-48-NG	48" x 96"	256 lbs.	\$3,914
PGBI-410-NG	48" x 120"	320 lbs.	\$6,541
PGBI-56-NG	60" x 72"	240 lbs.	\$4,960
PGBI-58-NG	60" x 96"	320 lbs.	\$6,541
PGBI-510-NG	60" x 120"	400 lbs.	\$8,167

Freight Class 70

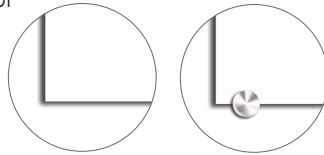
See page 15 for magnetic accessories for Magnetic Glass Markerboards.

Profile Series LCS³ Porcelain™ Markerboards

Frameless Porcelain Markerboards

The PROFILE SERIES Frameless Markerboard's incredibly smooth LCS³ Porcelain™ surface delivers a great writing experience that will stand the test of time. With simple installation and no exposed fasteners, these stylish, low profile markerboards appear to float on the wall. LCS³ Porcelain steel accepts magnets, won't ghost or stain, and is warranted for life.

Available in LCS³ White, Light Gray, or Beige.



Invisi-Mount

Stand-off
Edge Mount

1/2" Profile Series Invisi-Mount

Number	Size (H x W)	Weight	Price
C-FPM12-0304-Z	36" x 48"	48 lbs.	\$834
C-FPM12-0404-Z	48" x 48"	64 lbs.	\$879
C-FPM12-0405-Z	48" x 60"	80 lbs.	\$1,074
C-FPM12-0406-Z	48" x 72"	96 lbs.	\$1,112
C-FPM12-0408-Z	48" x 96"	128 lbs.	\$1,320
C-FPM12-0410-Z	48" x 120"	160 lbs.	\$1,558
C-FPM12-0504-Z	60" x 48"	80 lbs.	\$1,172
C-FPM12-0506-Z	60" x 72"	120 lbs.	\$1,594
C-FPM12-0508-Z	60" x 96"	160 lbs.	\$2,024
C-FPM12-0510-Z	60" x 120"	225 lbs.	\$2,452

Freight Class 70

1/4" Profile Series Invisi-Mount

Number	Size (H x W)	Weight	Price
C-FPM14-0304-Z	36" x 48"	42 lbs.	\$820
C-FPM14-0404-Z	48" x 48"	56 lbs.	\$836
C-FPM14-0405-Z	48" x 60"	70 lbs.	\$1,003
C-FPM14-0406-Z	48" x 72"	84 lbs.	\$1,047
C-FPM14-0408-Z	48" x 96"	112 lbs.	\$1,232
C-FPM14-0410-Z	48" x 120"	140 lbs.	\$1,950
C-FPM14-0504-Z	60" x 48"	70 lbs.	\$1,142
C-FPM14-0506-Z	60" x 72"	105 lbs.	\$1,550
C-FPM14-0508-Z	60" x 96"	140 lbs.	\$1,942

Freight Class 70

1/4" Profile Series Stand-off Mount

Number	Size (H x W)	Weight	Price
C-FPM14-0304-SO	36" x 48"	42 lbs.	\$678
C-FPM14-0404-SO	48" x 48"	56 lbs.	\$796
C-FPM14-0405-SO	48" x 60"	70 lbs.	\$880
C-FPM14-0406-SO	48" x 72"	84 lbs.	\$997
C-FPM14-0408-SO	48" x 96"	112 lbs.	\$1,140
C-FPM14-0410-SO	48" x 120"	140 lbs.	\$1,420
C-FPM14-0504-SO	60" x 48"	70 lbs.	\$1,002
C-FPM14-0506-SO	60" x 72"	105 lbs.	\$1,350
C-FPM14-0508-SO	60" x 96"	140 lbs.	\$1,656

Freight Class 70

MIX Mobiles and Markerboards

MIX Markerboards

MIX wall mounted markerboards have a metal accent strip highlighting the integrated marker rail. See page 16 for wood frame stain options.



Wall Mounted LCS³ Porcelain™ Markerboard

Number	Size (H x W)	Weight	Price
MX-4836-MB	48" x 36"	60 lbs.	\$1,277
MX-4848-MB	48" x 48"	80 lbs.	\$1,473
MX-3648-MB	36" x 48"	60 lbs.	\$1,275
MX-3660-MB	36" x 60"	75 lbs.	\$1,614
MX-4872-MB	48" x 72"	100 lbs.	\$1,864
MX-4896-MB	48" x 96"	120 lbs.	\$2,298

Wall Mounted Claridge Glass Markerboard

Number	Size (H x W)	Weight	Price
MX-4836-MG	48" x 36"	84 lbs.	\$1,790
MX-4848-MG	48" x 48"	112 lbs.	\$2,133
MX-3648-MG	36" x 48"	84 lbs.	\$1,788
MX-3660-MG	36" x 60"	105 lbs.	\$2,422
MX-4872-MG	48" x 72"	140 lbs.	\$2,821
MX-4896-MG	48" x 96"	168 lbs.	\$3,550

Wall Mounted Claridge Cork Tackboard

Number	Size (H x W)	Weight	Price
MX-4836-CC	48" x 36"	84 lbs.	\$1,697
MX-4848-CC	48" x 48"	112 lbs.	\$1,573
MX-3648-CC	36" x 48"	84 lbs.	\$1,344
MX-3660-CC	36" x 60"	105 lbs.	\$1,745
MX-4872-CC	48" x 72"	140 lbs.	\$2,026
MX-4896-CC	48" x 96"	168 lbs.	\$2,522

MIX Contemporary Mobiles

In Claridge's new MIX line of highly customizable, mixed-material mobile markerboards, those who design for collaborative communication environments now have more flexibility to achieve their desired aesthetic. With MIX, you can customize nearly every markerboard component – from colors, finishes and writing surfaces to metal trays, bases and accent strips – resulting in a virtually unlimited palette that transforms your design concept into creation. See page 16 for wood frame stain options.



Contemporary Mobile - Full LCS³ Porcelain™ 2 Sides

Number	Size (H x W)	Weight	Price
MXC-6036-MB-MB	60" x 36"	114 lbs.	\$2,818
MXC-6042-MB-MB	60" x 42"	132 lbs.	\$2,873
MXC-6048-MB-MB	60" x 48"	144 lbs.	\$2,873
MXC-6060-MB-MB	60" x 60"	174 lbs.	\$3,051

Contemporary Mobile - Full Claridge Glass 2 Sides

Number	Size (H x W)	Weight	Price
MXC-6036-MG-MG	60" x 36"	255 lbs.	\$4,189
MXC-6042-MG-MG	60" x 42"	297 lbs.	\$4,244
MXC-6048-MG-MG	60" x 48"	320 lbs.	\$4,244
MXC-6060-MG-MG	60" x 60"	400 lbs.	\$4,748

Contemporary Mobile - Full LCS³ Porcelain™ and Claridge Cork

Number	Size (H x W)	Weight	Price
MXC-6036-MB-CC	60" x 36"	237 lbs.	\$2,973
MXC-6042-MB-CC	60" x 42"	273 lbs.	\$3,028
MXC-6048-MB-CC	60" x 48"	297 lbs.	\$3,028

Contemporary Mobile - Full Claridge Glass and Claridge Cork

Number	Size (H x W)	Weight	Price
MXC-6036-MG-CC	60" x 36"	189 lbs.	\$3,775
MXC-6042-MG-CC	60" x 42"	222 lbs.	\$3,830
MXC-6048-MG-CC	60" x 48"	244 lbs.	\$3,830

Biophilic Panel LCS³ Porcelain™ 2 Sides

Number	Size (H x W)	Weight	Price
MXC-6042-MB-MB	60" x 42"	132 lbs.	CALL

Contemporary Mobile - Partial LCS³ Porcelain™ 2 Sides

Number	Size (H x W)	Weight	Price	Add Shelf
MXC-4836-MB-MB	48" x 36"	92 lbs.	\$2,687	\$231
MXC-4848-MB-MB	48" x 48"	116 lbs.	\$2,881	\$284
MXC-4860-MB-MB	48" x 60"	140 lbs.	\$3,074	\$316
MXC-4872-MB-MB	48" x 72"	164 lbs.	\$3,267	\$354

Contemporary Mobile - Partial Claridge Glass 2 Sides

Number	Size (H x W)	Weight	Price	Add Shelf
MXC-4836-MG-MG	48" x 36"	216 lbs.	\$3,538	\$231
MXC-4848-MG-MG	48" x 48"	270 lbs.	\$3,992	\$284
MXC-4860-MG-MG	48" x 60"	320 lbs.	\$4,446	\$316

Contemporary Mobile - Partial LCS³ Porcelain™ and Claridge Cork

Number	Size (H x W)	Weight	Price	Add Shelf
MXC-4836-MB-CC	48" x 36"	193 lbs.	\$2,780	\$231
MXC-4848-MB-CC	48" x 48"	241 lbs.	\$3,005	\$284
MXC-4860-MB-CC	48" x 60"	289 lbs.	\$3,229	\$316

Contemporary Mobile - Partial Claridge Glass and Claridge Cork

Number	Size (H x W)	Weight	Price	Add Shelf
MXC-4836-MG-CC	48" x 36"	152 lbs.	\$3,289	\$231
MXC-4848-MG-CC	48" x 48"	196 lbs.	\$3,660	\$284
MXC-4860-MG-CC	48" x 60"	240 lbs.	\$4,031	\$316

MIX Industrial Mobiles

MIX Industrial Mobiles feature functional exposed hex bolts and patinaed metal frames. The metal base is finished with a clear powder coating that retains the industrial flair and protects against rust and scratches. Industrial casters come with exposed brake locks. Optional metal shelf is available to match the base. See page 16 for wood frame stains options.

Industrial Mobile - Full LCS³ Porcelain™ 2 Sides

Number	Size (H x W)	Weight	Price
MXI-6036-MB-MB	60" x 36"	114 lbs.	\$2,818
MXI-6042-MB-MB	60" x 42"	132 lbs.	\$2,873
MXI-6048-MB-MB	60" x 48"	144 lbs.	\$2,873
MXI-6060-MB-MB	60" x 60"	174 lbs.	\$3,051

Industrial Mobile - Full Claridge Glass 2 Sides

Number	Size (H x W)	Weight	Price
MXI-6036-MG-MG	60" x 36"	255 lbs.	\$4,189
MXI-6042-MG-MG	60" x 42"	297 lbs.	\$4,244
MXI-6048-MG-MG	60" x 48"	320 lbs.	\$4,244
MXI-6060-MG-MG	60" x 60"	400 lbs.	\$4,748

Industrial Mobile - Full LCS³ Porcelain™ and Claridge Cork

Number	Size (H x W)	Weight	Price
MXI-6036-MB-CC	60" x 36"	237 lbs.	\$2,973
MXI-6042-MB-CC	60" x 42"	273 lbs.	\$3,028
MXI-6048-MB-CC	60" x 48"	297 lbs.	\$3,028

Industrial Mobile - Full Claridge Glass and Claridge Cork

Number	Size (H x W)	Weight	Price
MXI-6036-MG-CC	60" x 36"	189 lbs.	\$3,775
MXI-6042-MG-CC	60" x 42"	222 lbs.	\$3,830
MXI-6048-MG-CC	60" x 48"	244 lbs.	\$3,830

Biophilic Panel LCS³ Porcelain™ 2 Sides

Number	Size (H x W)	Weight	Price
MXI-6042-MB-MB	60" x 42"	132 lbs.	CALL



Industrial Mobile - Partial LCS³ Porcelain™ 2 Sides

Number	Size (H x W)	Weight	Price	Add Shelf
MXI-4836-MB-MB	48" x 36"	92 lbs.	\$2,687	\$231
MXI-4848-MB-MB	48" x 48"	116 lbs.	\$2,881	\$284
MXI-4860-MB-MB	48" x 60"	140 lbs.	\$3,074	\$316
MXI-4872-MB-MB	48" x 72"	164 lbs.	\$3,267	\$354

Industrial Mobile - Partial Claridge Glass 2 Sides

Number	Size (H x W)	Weight	Price	Add Shelf
MXI-4836-MG-MG	48" x 36"	216 lbs.	\$3,538	\$231
MXI-4848-MG-MG	48" x 48"	272 lbs.	\$3,992	\$284
MXI-4860-MG-MG	48" x 60"	320 lbs.	\$4,446	\$316

Industrial Mobile - Partial LCS³ Porcelain™ and Claridge Cork

Number	Size (H x W)	Weight	Price	Add Shelf
MXI-4836-MB-CC	48" x 36"	193 lbs.	\$2,780	\$231
MXI-4848-MB-CC	48" x 48"	241 lbs.	\$3,005	\$284
MXI-4860-MB-CC	48" x 60"	289 lbs.	\$3,229	\$316

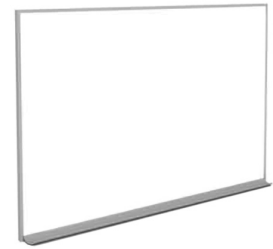
Industrial Mobile - Partial Claridge Glass and Claridge Cork

Number	Size (H x W)	Weight	Price	Add Shelf
MXI-4836-MG-CC	48" x 36"	152 lbs.	\$3,289	\$231
MXI-4848-MG-CC	48" x 48"	196 lbs.	\$3,660	\$284
MXI-4860-MG-CC	48" x 60"	240 lbs.	\$4,031	\$316

Concept Aluminum Framed Boards

Concept - Aluminum Frame Boards

Concept features a narrow face aluminum trim - 5/16" wide, with an eased edge. Aluminum is 1/8" thick adding depth to the trim perimeter. Markerboards are LCS³ porcelain enamel steel; tackboards can be Claridge Cork, or standard Guilford, Carnegie and Maharam fabrics. Sizes from 24" x 36" to 48" x 96".



Concept Markerboard

Number	Size (H x W)	Weight	Price
CP-0203-MB	24" x 36"	24 lbs.	\$224
CP-0304-MB	36" x 48"	42 lbs.	\$359
CP-0404-MB	48" x 48"	56 lbs.	\$438
CP-0406-MB	48" x 72"	84 lbs.	\$633
CP-0408-MB	48" x 96"	112 lbs.	\$796

Freight Class 70

Concept Claridge Cork Tackboard

Number	Size (H x W)	Weight	Price
CP-0203-COR	24" x 36"	18 lbs.	\$191
CP-0304-COR	36" x 48"	36 lbs.	\$357
CP-0404-COR	48" x 48"	48 lbs.	\$439
CP-0406-COR	48" x 72"	72 lbs.	\$616
CP-0408-COR	48" x 96"	96 lbs.	\$779

Freight Class 70

Concept Fabric Tackboards

Number	Size (H x W)	Weight	Price Guilford -FG	Price Carnegie -FC	Price Maharam -FM
CP-0203-	24" x 36"	12 lbs.	\$159	\$242	\$202
CP-0304-	36" x 48"	24 lbs.	\$277	\$467	\$423
CP-0404-	48" x 48"	32 lbs.	\$333	\$586	\$487
CP-0406-	48" x 72"	48 lbs.	\$457	\$838	\$688
CP-0408-	48" x 96"	64 lbs.	\$509	\$1,074	\$813

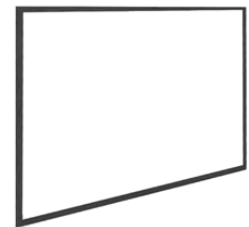
Freight Class 70

For Guilford fabrics, specify -FG; for Carnegie, -FC; and for Maharam, -FM. Be sure to specify color required.

Motif Wood Framed Boards

Motif - Wood Frame Boards

Motif Markerboards and Tackboards have a rounded edge profile - 1" deep with a narrow face trim. Frames available in Maple, Mahogany, Cherry, Walnut, Espresso and Ebony. Custom finishes are optional. Markerboards have LCS³ porcelain enamel steel writing surface; tack surfaces available in Claridge Cork, Carnegie, Guilford and Maharam fabrics.



Motif Markerboard

Number	Size (H x W)	Weight	Price
MO-0203-MB	24" x 36"	21 lbs.	\$283
MO-0304-MB	36" x 48"	42 lbs.	\$438
MO-0404-MB	48" x 48"	56 lbs.	\$543
MO-0406-MB	48" x 72"	84 lbs.	\$813
MO-0408-MB	48" x 96"	112 lbs.	\$1,003

Freight Class 70

Motif Claridge Cork Tackboard

Number	Size (H x W)	Weight	Price
MO-0203-COR	24" x 36"	20 lbs.	\$280
MO-0304-COR	36" x 48"	39 lbs.	\$469
MO-0404-COR	48" x 48"	52 lbs.	\$574
MO-0406-COR	48" x 72"	78 lbs.	\$795
MO-0408-COR	48" x 96"	104 lbs.	\$1,027

Freight Class 70

Motif Fabric Tackboards

Number	Size (H x W)	Weight	Price Guilford -FG	Price Carnegie -FC	Price Maharam -FM
MO-0203-	24" x 36"	14 lbs.	\$247	\$333	\$293
MO-0304-	36" x 48"	27 lbs.	\$429	\$619	\$544
MO-0404-	48" x 48"	36 lbs.	\$519	\$773	\$673
MO-0406-	48" x 72"	54 lbs.	\$714	\$1,094	\$945
MO-0408-	48" x 96"	72 lbs.	\$919	\$1,426	\$1,227

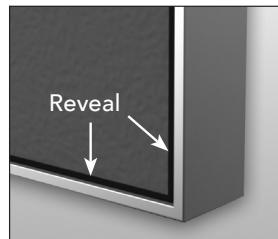
Freight Class 70

For Guilford fabrics, specify -FG; for Carnegie, -FC; and for Maharam, -FM. Be sure to specify color required.

Expression Modular Markerboards and Tackboards

Expressions Modular Communication System – With Reveal

Expressions markerboards and tackboards have a thin low-profile aluminum frame. Select from: Markerboards in LCS³ porcelain enamel steel or Magnetic Glass; Tackboards in Claridge Cork or Carnegie, Guilford and Maharam fabrics. Available in sizes from 18" x 24" to 4' x 8'. Can be installed individually or in groupings. Hang portrait or landscape.



Expressions Markerboard

Number	Size (H x W)	Weight	Price
EXP-MCS-1824-MB	18" x 24"	12 lbs.	\$556
EXP-MCS-2436-MB	24" x 36"	24 lbs.	\$709
EXP-MCS-3648-MB	36" x 48"	48 lbs.	\$879
EXP-MCS-4848-MB	48" x 48"	64 lbs.	\$1,120
EXP-MCS-4872-MB	48" x 72"	96 lbs.	\$1,468
EXP-MCS-4896-MB	48" x 96"	128 lbs.	\$1,821

Freight Class 70

Expressions Magnetic Glass Markerboard

Number	Size (H x W)	Weight	Price
EXP-MCS-2436-MG	24" x 36"	48 lbs.	\$740
EXP-MCS-3648-MG	36" x 48"	96 lbs.	\$1,063
EXP-MCS-4848-MG	48" x 48"	128 lbs.	\$1,227

Freight Class 70

Expressions Fabric Tackboard

Number	Size (H x W)	Weight	Price	Price	Price
			Guilford -FG	Carnegie -FC	Maharam -FM
EXP-MCS-1824-	18" x 24"	8 lbs.	\$255	\$323	\$296
EXP-MCS-2436-	24" x 36"	15 lbs.	\$293	\$395	\$355
EXP-MCS-3648-	36" x 48"	30 lbs.	\$474	\$679	\$546
EXP-MCS-4848-	48" x 48"	40 lbs.	\$551	\$825	\$717
EXP-MCS-4872-	48" x 72"	60 lbs.	\$832	\$1,242	\$1,081
EXP-MCS-4896-	48" x 96"	80 lbs.	\$889	\$1,435	\$1,220

Freight Class 70

For Guilford fabrics, specify -FG; for Carnegie, -FC; and for Maharam, -FM. Be sure to specify color required.



Sample configurations

Expressions Claridge Cork Tackboard

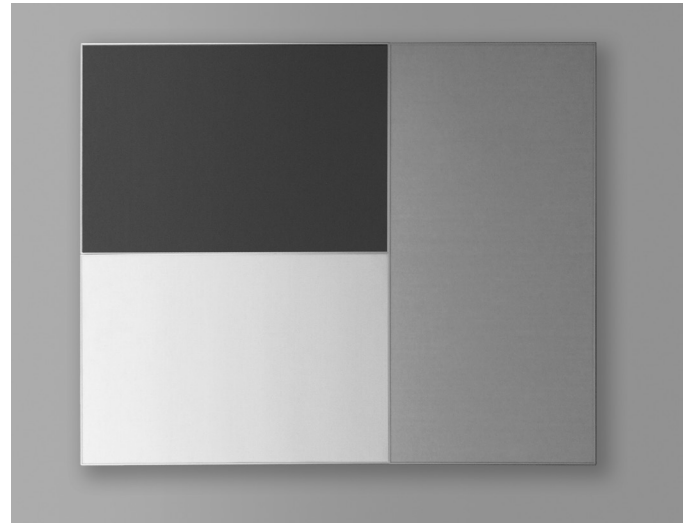
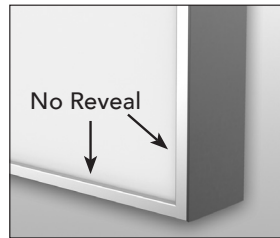
Number	Size (H x W)	Weight	Price
EXP-MCS-1824-COR	18" x 24"	11 lbs.	\$250
EXP-MCS-2436-COR	24" x 36"	21 lbs.	\$313
EXP-MCS-3648-COR	36" x 48"	42 lbs.	\$518
EXP-MCS-4848-COR	48" x 48"	56 lbs.	\$610
EXP-MCS-4872-COR	48" x 72"	84 lbs.	\$919
EXP-MCS-4896-COR	48" x 96"	112 lbs.	\$1,129

Freight Class 70

X2 Modular Markerboards and Tackboards

X2 Series Modular Communication System – No Reveal

X2 Series boards have a narrow 1/8" face aluminum frame. Select from: Markerboards in LCS³ porcelain enamel steel or Magnetic Glass; Tackboards in Claridge Cork or Carnegie, Guilford and Maharam fabrics. Available in sizes from 18" x 24" to 4' x 8'. Hang portrait or landscape. Install individually or in groupings.



X2 Markerboard – No Reveal

Number	Size (H x W)	Weight	Price
X2-MCS-1824-MB	18" x 24"	12 lbs.	\$206
X2-MCS-2436-MB	24" x 36"	24 lbs.	\$305
X2-MCS-3648-MB	36" x 48"	48 lbs.	\$457
X2-MCS-4848-MB	48" x 48"	64 lbs.	\$564
X2-MCS-4872-MB	48" x 72"	96 lbs.	\$780
X2-MCS-4896-MB	48" x 96"	128 lbs.	\$1,002

Freight Class 70

X2 Magnetic Glass Board – No Reveal

Number	Size (H x W)	Weight	Price
X2-MCS-2436-MG	24" x 36"	48 lbs.	\$647
X2-MCS-3648-MG	36" x 48"	96 lbs.	\$938
X2-MCS-4848-MG	48" x 48"	128 lbs.	\$1,169

Freight Class 70

X2 Fabric Tackboard – No Reveal

Number	Size (H x W)	Weight	Price	Price	Price
			Guilford -FG	Carnegie -FC	Maharam -FM
X2-MCS-1824-	18" x 24"	8 lbs.	\$192	\$267	\$240
X2-MCS-2436-	24" x 36"	15 lbs.	\$236	\$331	\$294
X2-MCS-3648-	36" x 48"	30 lbs.	\$409	\$600	\$525
X2-MCS-4848-	48" x 48"	40 lbs.	\$486	\$740	\$640
X2-MCS-4872-	48" x 72"	60 lbs.	\$618	\$996	\$849
X2-MCS-4896-	48" x 96"	80 lbs.	\$762	\$1,270	\$1,070

Freight Class 70

For Guilford fabrics, specify -FG; for Carnegie, -FC; and for Maharam, -FM. Be sure to specify color required.



Sample configurations

X2 Claridge Cork Tackboard – No Reveal

Number	Size (H x W)	Weight	Price
X2-MCS-1824-COR	18" x 24"	11 lbs.	\$218
X2-MCS-2436-COR	24" x 36"	21 lbs.	\$278
X2-MCS-3648-COR	36" x 48"	42 lbs.	\$455
X2-MCS-4848-COR	48" x 48"	56 lbs.	\$547
X2-MCS-4872-COR	48" x 72"	84 lbs.	\$756
X2-MCS-4896-COR	48" x 96"	112 lbs.	\$949

Freight Class 70

Evolve Markerboard

Evolve Markerboards feature a smooth, low gloss LCS³ dry-erase porcelain surface and a unique high/low profile aluminum trim. Wide face trim at top and bottom is 2-3/8"; narrow trim at sides is 5/16". Snap-in accessory tray is designed with a lip to hold accessories; tray is 2" wide.



Evolve Markerboard

Number	Size (H x W)	Weight	Price
EV-0404-MB	48" x 48"	56 lbs.	\$542
EV-0405-MB	48" x 60"	70 lbs.	\$664
EV-0406-MB	48" x 72"	84 lbs.	\$712
EV-0408-MB	48" x 96"	112 lbs.	\$883
EV-0504-MB	60" x 48"	70 lbs.	\$693
EV-0506-MB	60" x 72"	105 lbs.	\$970
EV-0508-MB	60" x 96"	140 lbs.	\$1,156

Freight Class 70

Evolve Tackboard

Evolve Tackboards feature the same contrasting high/low profile aluminum trim as Evolve markerboards – 2-3/8" wide at top and bottom, 5/16" wide on the sides. Tack surface available in Claridge Cork, or standard Carnegie, Guilford and Maharam fabrics.



Evolve Tackboard

Number	Size (H x W)	Weight	Price
EV-0404-TB	48" x 48"	48 lbs.	\$644
EV-0406-TB	48" x 72"	72 lbs.	\$822
EV-0408-TB	48" x 96"	96 lbs.	\$996
EV-0504-TB	60" x 48"	60 lbs.	\$735
EV-0604-TB	72" x 48"	72 lbs.	\$822

Freight Class 70

Evolve Sliding System

Evolve Markerboards and Tackboards are on the move! Evolve sliders combine Evolve sliding panels with the same high/low profile 2-3/8" wide face trim at top and bottom and 5/16" narrow face trim at the sides with an affixed Evolve Markerboard. Rollers and brackets included for mounting on Evolve Markerboards or Tackboards. Use Evolve board pricing shown above for fixed panel for Sliding System.

Evolve Sliding Panels

Number	Size (H x W)	Weight	Price
EVS-0403-MB	48" x 36"	42 lbs.	\$525
EVS-0404-MB	48" x 48"	56 lbs.	\$561

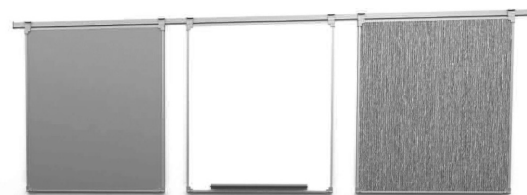
Freight Class 70



Trak-it System

Trak-it Panel

Double-sided panels are easy to re-arrange. Available in three sizes - 18" x 24", 24" x 36" and 36" x 48" - with your choice of LCS³ porcelain enamel steel markerboard, Claridge Cork tackboard or standard Guilford, Carnegie and Maharam fabrics - any combination. Specify type(s) of material and color(s). Panels hang portrait or landscape from optional Trak-it Rail sold in standard 10 ft. lengths. Rail not included in board price.



Markerboard both sides

Number	Size (H x W)	Weight	Price
TI-1824-MB-MB	18" x 24"	7 lbs.	\$247
TI-2436-MB-MB	24" x 36"	14 lbs.	\$353
TI-3648-MB-MB	36" x 48"	27 lbs.	\$588

Freight Class 70

Tackboard both sides

Number	Size (H x W)	Weight	Price
TI-1824-TB-TB	18" x 24"	7 lbs.	\$247
TI-2436-TB-TB	24" x 36"	14 lbs.	\$353
TI-3648-TB-TB	36" x 48"	27 lbs.	\$588

Freight Class 70

Markerboard one side; Tackboard other

Number	Size (H x W)	Weight	Price
TI-1824-MB-TB	18" x 24"	7 lbs.	\$247
TI-2436-MB-TB	24" x 36"	14 lbs.	\$353
TI-3648-MB-TB	36" x 48"	27 lbs.	\$588

Freight Class 70

Trak-it rail, Aluminum rail in 10' lengths

Number	Size	Weight	Price
TI-RAIL-10	10 lin. ft. of track	5 lbs.	\$144

Freight Class 70

For optional Trak-it tray, specify 264M1-CA and add \$44.00.

Xchange Graphic Boards

Xchange Graphic Boards

Glass markerboard includes an interchangeable graphic insert that slides easily behind clear 1/4" low-iron tempered glass writing surface. Low profile aluminum frame available in black or white powder coat finish.

Available in three sizes: 18" x 24", 24" x 36", and 36" x 48".

Xchange Graphic Board

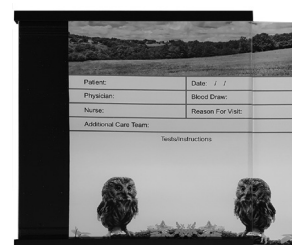
Black Frame Number	White Frame Number	Size (H x W)	Weight	Price
XC1824B	XC1824W	18" x 24"	15 lbs.	\$501
XC2436B	XC2436W	24" x 36"	30 lbs.	\$796
XC3648B	XC3648W	36" x 48"	60 lbs.	\$1,363

Freight Class 70

Additional Xchange Graphic Insert

Number	Size (H x W)	Weight	Price
XCG1824	18" x 24"	1 lb.	\$108
XCG2436	24" x 36"	2 lbs.	\$166
XCG3648	36" x 48"	4 lbs.	\$276

Freight Class 70



X2 Series Full Height Mobile Markerboard

X2 Series Double-Sided Mobile markerboards are available in your choice of LCS³ Porcelain enamel steel or Magnetic Glass writing surface in four widths - 30", 36", 48" and 60". Unit is approx. 72" tall; full height markerboard. 2 locking and 2 non-locking casters for easy mobility. Ganging option available.



Full Height LCS³ Porcelain Markerboard

Number	Size (H x W)	Weight	Price
X2-MM-7230-MB-MB	72" x 30"	83 lbs.	\$1,669
X2-MM-7236-MB-MB	72" x 36"	100 lbs.	\$1,680
X2-MM-7248-MB-MB	72" x 48"	115 lbs.	\$1,698
X2-MM-7260-MB-MB	72" x 60"	144 lbs.	\$2,216

Freight Class 85

Full Height Magnetic Glass Markerboard

Number	Size (H x W)	Weight	Price
X2-MM-7230-MG-MG	72" x 30"	165 lbs.	\$2,489
X2-MM-7236-MG-MG	72" x 36"	198 lbs.	\$2,569
X2-MM-7242-MG-MG	72" x 42"	231 lbs.	\$2,860
X2-MM-7260-MG-MG	72" x 60"	330 lbs.	\$4,468

Freight Class 85

X2 Series 3 Caster Mobile Markerboard

X2 Series Double-Sided 3 Wheel Mobile markerboards are available in your choice of LCS³ porcelain enamel steel writing surface in three widths - 30", 36" and 48". Unit is approx. 72" tall; full height markerboard. Locking and non-locking casters. Designed for use between work stations.



3 Caster Markerboard

Number	Size (H x W)	Weight	Price
X2-MM3-7230-MB-MB	72" x 30"	83 lbs.	\$1,642
X2-MM3-7236-MB-MB	72" x 36"	100 lbs.	\$1,654
X2-MM3-7248-MB-MB	72" x 48"	115 lbs.	\$1,673

Freight Class 85

NOTE: Powder coat option additional \$150.

X2 Mobiles double-sided surface is available with any combination of markerboard, tackboard, and/or glass markerboard. Call for pricing.

X2 Series Partial Height Mobile Markerboard

X2 Series Double-Sided Mobile markerboards are available in your choice of LCS³ porcelain enamel steel writing surface in three widths - 30", 36" and 48". Unit is approx. 72" tall; markerboard is 36" high. 2 locking and 2 non-locking casters for easy mobility.



Partial Height Markerboard

Number	Size (H x W)	Weight	Price
X2-MMN-7230-MB-MB	72" x 30"	67 lbs.	\$1,235
X2-MMN-7236-MB-MB	72" x 36"	80 lbs.	\$1,244
X2-MMN-7248-MB-MB	72" x 48"	95 lbs.	\$1,277

Freight Class 85

X2 Series Double Sided Markerboard/Tackboard Mobile

Available with LCS³ Markerboard at top and Claridge Cork at bottom (specify cork color). Specify height for markerboard and tack surface. Available in three widths - 30", 36" and 48". Unit is 72" tall. Locking and non-locking casters.



Markerboard/Tackboard Mobile

Number	Size (H x W)	Weight	Price
X2-MMNT-7230-MB-MB	72" x 30"	83 lbs.	\$1,492
X2-MMNT-7236-MB-MB	72" x 36"	100 lbs.	\$1,501
X2-MMNT-7248-MB-MB	72" x 48"	115 lbs.	\$1,522

Freight Class 85

Utility A-Frame Mobile

A-Frame Utility Mobile Markerboard features full-length LCS³ porcelain enamel steel writing surface both sides. Unit has black powder coat finish aluminum frame. Display rail at top has hooks for use with flip charts. Locking casters provide mobility and stability. Markerboard is 66"H x 30" W.



Number	Size (H x W)	Weight	Price
UM-A-Frame	72" x 30"	120 lbs.	\$2,168

Freight Class 85

Space Creator

Space Creators are designed to create a mobile environment that quickly adapts to ever-changing needs. Panels are tiled to create a custom markerboard and/or tack surface. Furnished with two pie-shaped feet and a link for joining two or more Space Creators together. LCS³ porcelain enamel steel writing surface or Claridge Cork, and standard Guilford, Carnegie or Maharam fabric tack surfaces. For configurations using a combination of materials from panel-to-panel or side-to-side, use the price of the higher material. All Space Creators are 72" high and come in 30", 36", 48" and 60" widths. **NOTE: Powder coat option additional \$150.**



Markerboard both sides

72" high x 30" wide

No. of Tiles	Number	Weight	Price
1-tile	X2-SC-7230-1-MB-MB	117 lbs.	\$1,779
2-tiles	X2-SC-7230-2-MB-MB	117 lbs.	\$1,822
3-tiles	X2-SC-7230-3-MB-MB	117 lbs.	\$1,868
4-tiles	X2-SC-7230-4-MB-MB	117 lbs.	\$1,914

Freight Class 70

72" high x 36" wide

No. of Tiles	Number	Weight	Price
1-tile	X2-SC-7236-1-MB-MB	135 lbs.	\$1,788
2-tiles	X2-SC-7236-2-MB-MB	135 lbs.	\$1,845
3-tiles	X2-SC-7236-3-MB-MB	135 lbs.	\$1,902
4-tiles	X2-SC-7236-4-MB-MB	135 lbs.	\$1,959

Freight Class 70

72" high x 48" wide

No. of Tiles	Number	Weight	Price
1-tile	X2-SC-7248-1-MB-MB	171 lbs.	\$1,811
2-tiles	X2-SC-7248-2-MB-MB	171 lbs.	\$1,868
3-tiles	X2-SC-7248-3-MB-MB	171 lbs.	\$1,925
4-tiles	X2-SC-7248-4-MB-MB	171 lbs.	\$1,983

Freight Class 70

Fabric both sides

72" high x 30" wide

No. of Tiles	Number	Weight	Price Guilford -FG-FG	Price Carnegie -FC-FC	Price Maharam -FM-FM
1-tile	X2-SC-7230-1-	87 lbs.	\$1,556	\$2,032	\$1,926
2-tiles	X2-SC-7230-2-	87 lbs.	\$1,602	\$2,078	\$1,972
3-tiles	X2-SC-7230-3-	87 lbs.	\$1,648	\$2,124	\$2,018
4-tiles	X2-SC-7230-4-	87 lbs.	\$1,694	\$2,170	\$2,064

Freight Class 70

72" high x 36" wide

No. of Tiles	Number	Weight	Price Guilford -FG-FG	Price Carnegie -FC-FC	Price Maharam -FM-FM
1-tile	X2-SC-7236-1-	99 lbs.	\$1,565	\$2,041	\$1,935
2-tiles	X2-SC-7236-2-	99 lbs.	\$1,611	\$2,087	\$1,981
3-tiles	X2-SC-7236-3-	99 lbs.	\$1,657	\$2,133	\$2,027
4-tiles	X2-SC-7236-4-	99 lbs.	\$1,703	\$2,177	\$2,073

Freight Class 70

72" high x 48" wide

No. of Tiles	Number	Weight	Price Guilford -FG-FG	Price Carnegie -FC-FC	Price Maharam -FM-FM
1-tile	X2-SC-7248-1-	123 lbs.	\$1,588	\$2,064	\$1,958
2-tiles	X2-SC-7248-2-	123 lbs.	\$1,634	\$2,120	\$2,005
3-tiles	X2-SC-7248-3-	123 lbs.	\$1,680	\$2,176	\$2,051
4-tiles	X2-SC-7248-4-	123 lbs.	\$1,726	\$2,232	\$2,099

Freight Class 70

For Guilford fabrics, specify -FG-FG; for Carnegie, -FC-FC; and for Maharam, -FM-FM. Be sure to specify color required.

Glass Marker Walls

Glass Marker Walls Magnetic Receptive and Plain Glass

Extremely durable, virtually maintenance free, Glass Marker Walls are made of low-iron tempered glass for exceptional clarity. Your choice of 10 standard colors or 180 optional colors. Available in heights up to 8'. Price includes narrow face aluminum trim for top and bottom and T-molding that can be used as a glass spacer and/or to protect edge of glass when positioning two or more panels next to each other.

Glass Marker Wall

Number	Size (H x W)	Weight	Price
MGMW-64	6' x 4'	192 lbs.	\$1,825
MGMW-84	8' x 4'	256 lbs.	\$2,132
MGMW-104	10' x 4'	320 lbs.	\$2,969

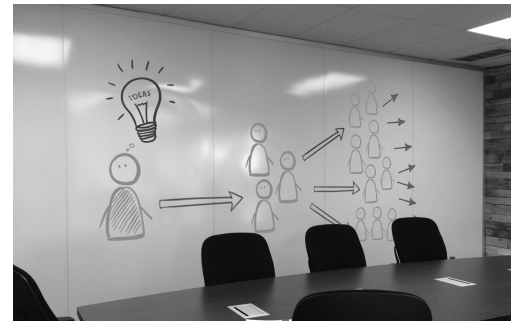
Freight Class 70



LCS³ Marker Walls

Porcelain Marker Walls

Marker Walls provide endless possibilities for capturing ideas as they flow. A writing wall ideal for brainstorming and presentations; magnetic receptive wall designed for displaying notices, photos, banners, and samples in offices, board rooms, conference rooms, etc. Marker Walls, with an LCS³ porcelain steel low gloss surface, can be used for projection. Butt panels together for a continuous writing surface. Marker Walls can be designed to cover entire walls, floor-to-ceiling.



Porcelain Marker Wall

Number	Price
MW1	\$14.70 / sq. ft.
MW2	\$24 / sq. ft.

Freight Class 70

Ask about Marker Wall installations using Claridge 272A snap-on trim and clips.

Tack Walls

Tack Walls

Tack Walls provide endless possibilities for capturing ideas as they flow. A tack wall designed for displaying notices, photos, banners, and samples in offices, board rooms, conference rooms, etc. Select Tack Wall material and color from standard Guilford, Carnegie and Maharam fabrics. Tack Walls can be designed to cover entire walls, floor-to-ceiling.

Tack Wall with Fabricork

Number	Price
TW1F	\$9.40 / sq. ft.
TW2F	\$14.70 / sq. ft.

Freight Class 70

Tack Wall with Designer Fabric

Number	Price
TW1D	\$12.60 / sq. ft.
TW2D	\$22 / sq. ft.

Freight Class 70



Accessories

Dry-Erase Markers

Four broad-tipped markers. One each: Red, Blue, Green and Black.



LCS673-4	1 lb.	\$13
----------	-------	------

Freight Class 100

Dry-Erase Cloth

12" x 12" Microfiber eraser cloth. Erases cleanly with no smearing. Designed to reduce marker residue build-up.



ECM227E	1 cloth	.5 lb.	\$4.50
ECM227D	1 dozen cloths	2 lbs.	\$27.50

Freight Class 100

Dry-Erase Kit

Four dry-erase markers and one Microfiber cloth.

LCS668-4	.5 lb.	\$18
----------	--------	------

Freight Class 100

Markerboard Cleaner

Cleans and restores LCS³ porcelain enamel steel markerboard surfaces. 8 oz. pump spray.



LCS683	1 lb.	\$10
--------	-------	------

Freight Class 70

Partition Panel Clip

Spring steel clips fit over the top of any 2" thick partitions. Small prongs fit underneath the board trim. Two each.



80	.5 lb.	\$26.50
----	--------	---------

Freight Class 70

Accessories for Magnetic Glass Boards

NEW Slim Marker Caddy

Lightweight aluminum with rare magnet backing measures 1-3/8" W, and 1-3/8" D. Holds 4 markers and microfiber cloth or standard eraser. Available in anodize finish, 10 standard colors or custom colors.



M-MC2	.5 lb.	\$70
M-MC2P	.5 lb.	\$76

Freight Class 70

Marker Caddy

Sculpted plastic magnetic holder with rare earth magnets measures 3-1/2" H, 3-1/8" W, and 1-3/4" D. Holds up to 8 markers or two markers and one microfiber cloth or standard eraser.



MGM-MC1	.5 lb.	\$31
---------	--------	------

Freight Class 70

Rare Earth Magnets

Claridge rare earth magnets, designed specifically for use on magnetic glass boards are 3/4" diameter and 1/4" thick. An attractive tapered cap makes them easy to grip.



MGM-REM1	.5 lb.	\$22
----------	--------	------

Freight Class 70

Magnetic Eraser

The black felt eraser surface cleans your board with ease. Strong rare earth magnets hold it on the board. 4-1/2" long, 2-1/8" wide and 7/8" thick.

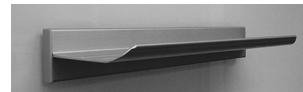


MGM-ME1	.5 lb.	\$26
---------	--------	------

Freight Class 70

Magnetic Tray

Strong rare earth magnets hold this satin anodize aluminum tray in place, yet allow the flexibility to re-position when needed. Fabric-backed tray has eased corners and measures 12" long, 1-1/2" high, 3" deep and will easily hold markers and eraser.

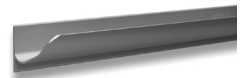


MGM-T1	12" length	1 lb.	\$158
--------	------------	-------	-------

Freight Class 70

Magnetic Aluminum Tray

For use on markerboards. 2" wide.

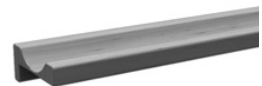


267M1	12" length	.5 lb.	\$33
-------	------------	--------	------

Freight Class 70

Magnetic Wood Tray

Includes two extra-strong magnets. For use on porcelain markerboard.

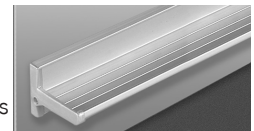


AT-12-Wood	12" length	1 lb.	\$63
------------	------------	-------	------

Freight Class 70

Adhesive-Backed Tray

For a more economical and permanent accessory tray, this traditional-looking satin anodize aluminum tray stays in place with double-sided tape and holds markers and erasers in one permanent location. Tray is 12" long, 2-7/16" high, and 2-11/16" deep. (For both porcelain and glass boards.)



GM-Tray1	12" length	1 lb.	\$42
----------	------------	-------	------

Freight Class 70

Fixed Marker Tray



Number	Weight per Linear Ft.	Price per Linear Ft.
CP-TRAY-Add	.5 lb	\$10

Freight Class 70

Materials, Finishes & Colors

Cork Options

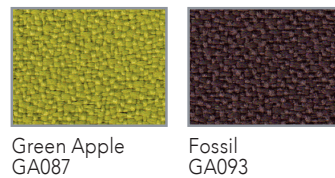


Fabric Options

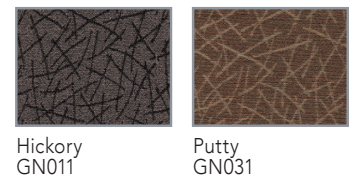
Guilford Bailey



Guilford Anchorage



Guilford Network Patterns



Maharam Messenger

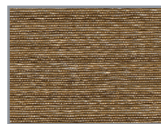


*Ask about additional
Bailey, Anchorage,
Network, Messenger,
Nexus and Quarry color
options.*

Carnegie Nexus



Dune
CN912



Oatmeal
CN908

Carnegie Quarry



Stone Manor
CQ99



Windswept
CQ94

Wood Finish Options



Maple

Mahogany

Cherry

Walnut

Espresso

Ebony

*Custom wood
finishes optional*

MIX Wood Stains



Clear

Vellum

Driftwood

Rustic

Colors are produced with reasonable accuracy.



Claridge
TURN WORKSPACES INTO IDEA PLACES

800.434.4610
www.claridgeproducts.com

601 Highway 62-65 South, PO Box 910
Harrison, AR 72602-0910